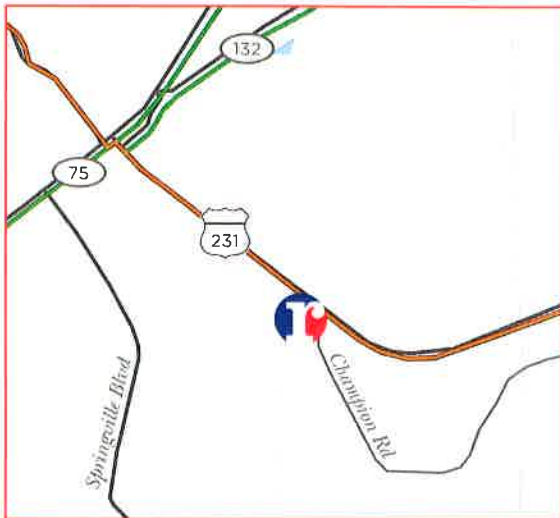
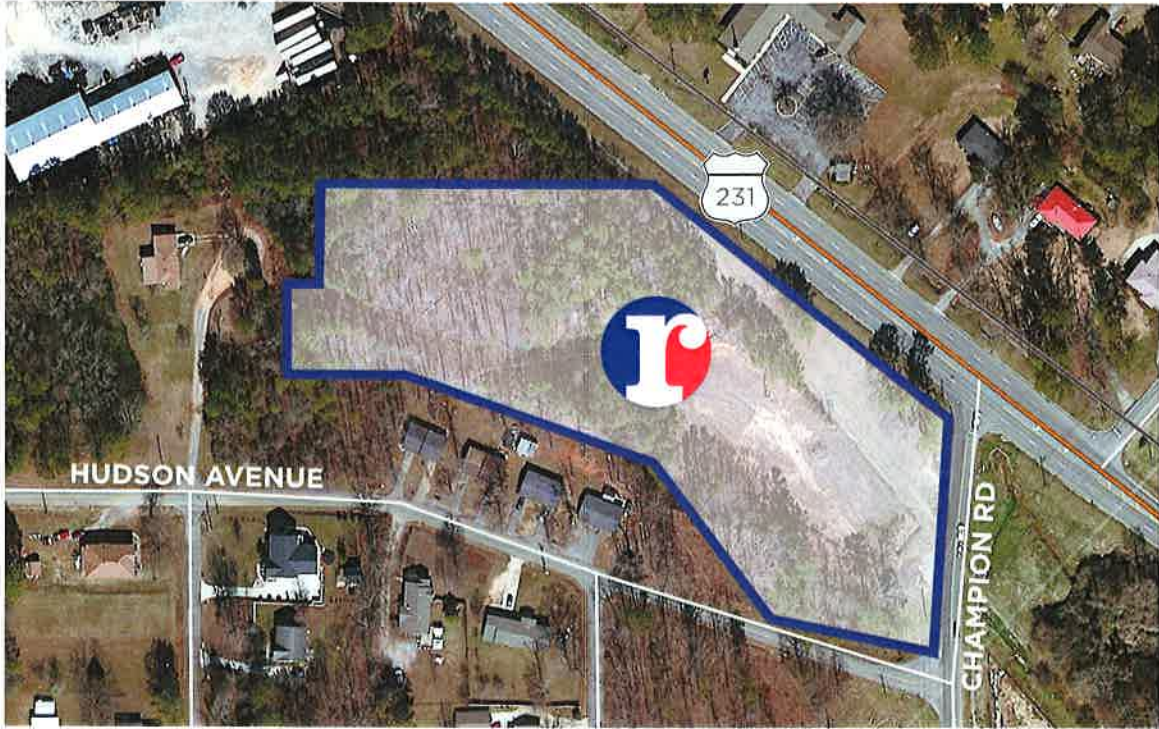


SALE

COMMERCIAL LAND WITH HWY 231 FRONTAGE

HIGHWAY 231 & CHAMPION ROAD, ONEONTA, ALABAMA 35121



- LOT SIZE 4 ACRES
- SALE PRICE BRING ALL OFFERS
- AVAILABLE IMMEDIATELY
- TRAFFIC 12,990 VPD (HIGHWAY 231)

○ DEMOGRAPHICS

<i>Distance</i>	<i>Population</i>	<i>Median Income</i>
1 MILE	1,084	\$52,666
3 MILES	5,344	\$47,290
5 MILES	10,242	\$43,748

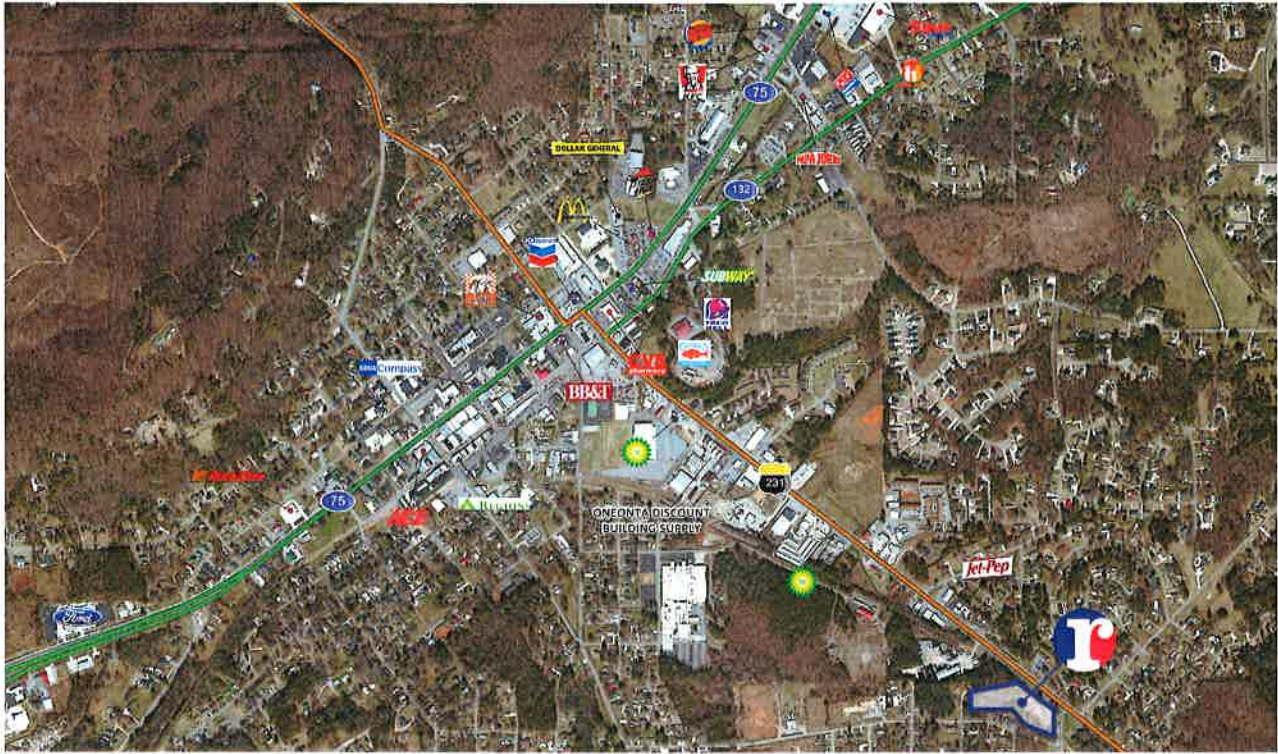
DAVID PLUMMER

P. 205.313.3676
F. 205.313.3677

DAVID@RETAILSPECIALISTS.COM



COMMERCIAL LAND AVAILABLE



- Excellent location on a major highway (Hwy 231) in the county's largest city
- Prime location on a corner lot on the way out of the city
- Recently cleared of bushes and trees
- Land needs to be graded to make flat